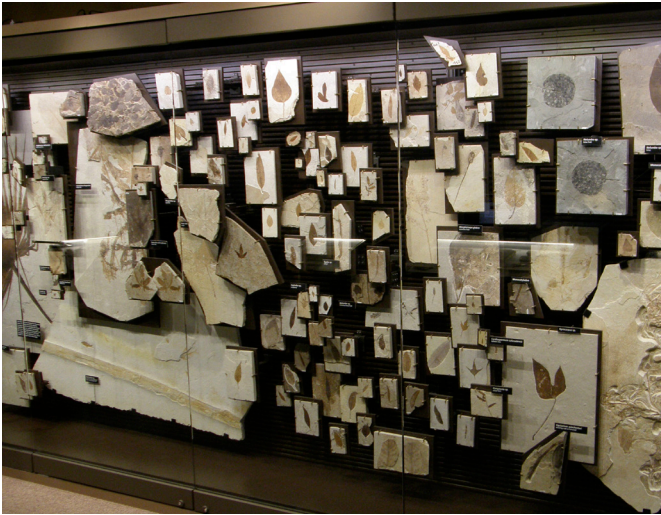


to

# Meet Us in Wyoming Explore Fossil Butte Monument Dig for Fossil Fish



## 9:00 AM • Meet at Fossil Butte National Monument

We'll meet you at "America's Aquarium in Stone," a world class display of Eocene Age fossils tucked away in the corner of SW Wyoming. We will be greeted by a ranger who will guide us through the displays and then take us for a behind-the-scenes tour that most visitors to the monument do not experience. You will get a first hand look at preparation methods and curation techniques, as well as an opportunity to see holotypes and other fossils not currently on display to the general public. It will be 2 hours jam-packed with information and experiences.

## 11:30 AM • Lunch @ Triangle Park in Kemmerer

From Fossil Butte it is a short drive to Kemmerer, where we'll grab a quick bite in the shade of the cottonwoods. You can also visit the original JC Penney and poke around the local tourist traps.

## 12:45 PM • American Fossil Quarry

The American Fossil Quarry is a short 20 minute drive from Kemmerer. Once there, you will experience, first hand, digging for fossils.

### Real World Field Experience

Using the tools that are provided, you will receive expert instruction on how to split and identify fossils. After that we'll cut you loose to dig for fossils. A typical afternoon is likely to yield between 10-25 whole and partial fish skeletons.

### Host Rock

Want to share this experience with your students next year? You are welcome to pack up 50-60 pounds of host rock to take back to your classroom.

### Lab Activities

Receive a set of lab activities and lesson plans matched to the newly adopted 2020 SEEd standards.

## 5:00 PM • Adios

The quarry closes at 4:00 PM; you will be on the road by 5:00 PM.



## The Specifics

**Dates:** June 27 or July 18

**Fee:** \$ 65./teacher. (\$ 180. value; dig & host rock)

**Trip Size:** Limited to 30 teachers.

**Transportation:** Carpool or drive individually

**Register on line:** [www.looseinthelab.com](http://www.looseinthelab.com)

*Map and directions available online.*

### You Will Want to Bring ...

Water, lunch, snacks, sunglasses, sunscreen, a hat, and gloves. The quarry is at 7,300 feet in elevation and the only amenity is an outhouse. That's as fancy as it gets. You'll also want to bring empty cardboard boxes and wrapping material (newspaper or bubble wrap) to ensure your fossils and host rock have a safe journey home.

# Meet Us at Topaz Mountain For a Mine Blast & Private Dig to Collect Champagne Topaz



## 11 AM to 3 PM • Crystal Dig

Once we get the all clear from the mine director, you will experience, first hand, digging for topaz crystals.

### Real World Field Experience

Using the tools that are provided, you will receive instruction on how to identify and split rock where the crystals are likely to be found. Once you have a good understanding of the process, we will turn you loose to hunt in the blast area for the afternoon. Take breaks and eat when necessary. You can leave the quarry as your schedule dictates.

### Host Rock

You'll also be able to share this experience with your students. Bring a 5 gallon bucket to pack with host rock and take back to your classroom for your students.

## 9:45 AM • Meet @ Intermountain Power Plant

We'll meet up near the Intermountain Power Plant a few miles north of Delta. At the intersection of highways 6 and 138 there is a large parking area just south of the junction. Look for a white pickup flying an American flag and park there. We will gather everyone up and head west on Hwy 50 to Topaz Mountain, roughly 45 minutes away.

## 10:30 AM • Private Mine Blast

This is a unique opportunity to witness a mine blast (from a safe distance) and also have the entire collecting area to yourself – a truly private dig experience. Topaz Mountain Adventures, our hosts, will set dynamite charges on the mountain before we arrive. One teacher from our group will be selected to set off the charges and rest of us get to enjoy the show (left).



## The Specifics

**Dates:** June 25 or July 16

**Fee:** \$ 55./teacher. (\$ 165. value; blast, dig & host rock)

**Trip Size:** Limited to 30 teachers.

**Transportation:** Carpool or drive individually

**Register on line:** [www.looseinthelab.com](http://www.looseinthelab.com)

*Map and directions available online.*

### You Will Want to Bring ...

Lots of water, lunch & snacks, sunglasses, sunscreen, a hat, and gloves. The quarry is located in the west desert and the only amenity is an outhouse. You'll also want to bring cardboard boxes and wrapping material (newspaper) to protect your crystals in transit.